

St. Catherine's Primary School

“A family school in the heart of Strabane”



“Achieving Excellence Together”

School Prospectus

Principal: Mrs Bridget Wilders
B.Ed, P.G. Dip Ed., P.Q.H.

Tel: Senior School :02871 382614

Fax: 02871 382482

Email : bwilders592@c2kni.net

Website : www.stcatherinesps.co.uk

Junior School: 02871 382272

02871 382139

Download our FREE APP : St Catherines PS,Strabane

Find us on Facebook: StCatherines PrimarySchool

Follow us on Twitter : [StCatherinesPS](#)

Follow us on Instagram : [St Catherine's Primary School](#)

A Letter from the Principal.

Dear Parent,

Choosing a school for your child can be such a challenging time. There are so many questions that race through your mind. However there is one common goal that everyone wants for their child and that is that they will be happy, secure and well educated no matter where they go.

We have a school of happy, secure and well educated children here at St. Catherine's P.S.; a warm, friendly, nurturing, family atmosphere can be felt the moment you walk through the door. All the children know and look out for each other. All staff know every child by name and have a great understanding of and empathy for their learning needs. There is a great feeling of teamship in the school. Everyone is courteous and friendly. Our Catholic , Christian, Inclusive ethos is evident all around the school.

We aim for excellence and we believe that together we can achieve this . We are very confident that the service that is being provided for our pupils in our wee school meets their individual needs and we would like to share that with you. To this end we are delighted that you are considering St. Catherine's Primary School for your child.

We look forward to getting to know you and your child. We are one big happy family here at St. Catherine's Primary School and we would like to warmly welcome you and your child to this special family and learning community.

We know that your child will be developed academically(high academic achievements rates for all children including those with special/ additional learning needs) , physically, culturally, spiritually, socially and morally and in seven years time will emerge as a confident, competent young person ready to take on the world!

We place great emphasis in our school on the good relationships between pupils, parents, staff, governors and community and the importance of everyone working together to provide the very best opportunities for our children.

I am always pleased and proud to meet you and can only wish you and your child every good wish in anticipation of your joining with us on what can only be an amazing educational journey into the future!

Sincerely Yours,

Bridget Wilders
Principal



The staff/ tutors of the school are:

Principal:

Mrs. B. Wilders

Vice – Principal:

Miss J. Doherty

Class Teachers:**Junior School:**

Mrs. D. Doherty	P.1
Miss C. Hutton	P.1
Ms.Y. Mc Gowan	P.2
Mrs. A.M. Mc Glynn	P.2
Miss M. Maguire	P.3
Mrs. S. Vaughan	P.3
Miss E. Mathers	P.4
Ms. B. Kelly	P.4

Senior School:

Mrs. C. Gormley	P.5
Mrs. S.O’Kane	P.5
Miss E. Keyes	P.6
Mrs. C. Deery	P.6
Mrs. C. Gillespie	P.7
Mrs. B. Daly	P.7

Nursery Teachers:

Mrs. B. Porter

Ms. K. Carlin

Learning Support Teachers:

Mrs. L. Downey/

Mrs J Mc Laughlin

Miss E. Mc Kane

Learning Centre Teachers:

Mrs C Hamilton

Mrs C Connolly

**Nursery Assistants:**

Mrs B

Mrs. Shauna Caulfield

Additional Staff : Mrs. A. Fleming, Ms R. Devine,

Miss S. Barr, Ms Z. Foley

Classroom Assistants:

Junior School:

Miss. I. Mc Kane

Mrs. L. Kelly

Mrs. N. Walsh

Mrs P. Doherty

Mrs. J. Brogan

Mrs. E. Mc Cauley

Miss P. Mc Bride

Miss N. Devenney

Mrs. M. Mc Namee

Mrs. L. Moore-Mc Laughlin

Miss L. Harpur

Miss S. Patton

Ms. S. Porter

Ms. L. Mc Daid

Ms. N. Logue

Ms. L. French

Miss A. Mc Elwee

Senior School

Ms. F. Deans

Miss Chloe Deans

Mrs. C. Breslin

Mr. J. Forbes

Ms. B. Porter

Ms. D. Diver

Mrs. F. Dudgeon

Mrs. J. Wilders

Mrs. L. Bonner

Mr. P. Harley

Miss Courtney Deans

Miss L. Mc Granaghan

Mrs F. Kennedy

Ms. R. Devine



I.C.T. Technician/ Clerical Support: Ms. M. Mc Gavigan

Peripatetic Music Teachers: Mr. D. Mc Gillion

Ms. M. Strawbridge

Mrs. H. O'Hare

Ms E. O'Gorman

School Chaplin:

Rev. D. Boland P.P.

Sports Tutors: We have Sports Coaches for Soccer, Gaelic, Hurling, Rugby and Cricket. These coaches may vary from year to year.

Chinese Language Tutors: We have a Chinese Language Tutor for each school site sponsored by the Southwest College.

Supervisory Assistants:**Senior School:**

Mrs. G. Millar
Mrs. J. Maguire
Mrs. C. Boyle
Ms. D. Mc Grinder

Junior School:

Ms. C. Mc Garrigue
Mrs. M. Mc Namee
Ms. O. Mc Grinder
Miss S. Patton

Clerical Officers:

Senior School:
Mrs. C. Kelly

Junior School:
Mrs. E. Burns
Mrs C. Devine-Roberts

Building Supervisors:

Senior School:
Mr. A. Logue

Junior School:
Mr. N. Barr

School Crossing Patrol:

Senior School:
Mr. E. Porter

Junior School:
Mrs. C. Boyle

Cleaners:

Senior School:

Mrs. G. Devenney

Mrs. A. Devlin

Mrs. A. Chambers

Mr. J. Brennan

Junior School:

Ms. D. Mc Grinder

Mr. N. Barr

Mr. B. Mc Daid

Cooks-in-charge:

Senior School:

Mrs. T. Harpur

Junior School:

Mrs. M. Duncan

The Board of Governors

Chairperson: Mrs. B. Allen

Vice Chairperson : Mr. P. Boylan

Nominated by the Trustees:

Rev. D. Boland, Mr. P. Boylan, Mrs. C. Clarke

Nominated by the Education Authority Western Region:

Mrs. M. Cooke

Mrs. M. Brown

Nominated by the Department of Education:

Mrs. B. Allen (Chairperson)

Representing Parents:

Mrs. A. Kelly

Representing Teachers:

Miss J. Doherty

Principal : Mrs. B. Wilders



P.T.F.A.

(Parent, Teacher and Friends Association)

We really value the support that we get from our Parents, Friends, Neighbours and Community Members

We have a great P.T.F.A. in St. Catherine's who assist with fundraising and various other events that take place during the school year to enhance the quality of provision for our children and unites us all as a very close family school.

We would like you to consider getting involved in this new parent group You can make a difference for your child's school. Please help!



St. Catherine's P.S. Vision Statement

- An outstanding school which is **wholly** child centred and is rooted in the Gospel Values of Christ where children are the first priority at all times
- A school of excellent practice where dedicated, talented staff will collaborate to ensure high quality teaching and learning for all our pupils from Nursery to Year 7

- A school with a family atmosphere – where emphasis is placed on forging strong, positive relationships between pupils, parents (who are the first educators), Staff, Governors, Parish & Community which will result in...

Confident, happy young people who have high aspirations and high expectations who have developed physically, intellectually, emotionally, socially, morally and spiritually, who are life long learners and who will have the skills and capabilities to be successful, confident and comfortable in an ever changing world.



About our school

St. Catherine's Primary School opened in September 2014 as a result of the amalgamation of St. Anne's Primary School and Barrack Street Boys' Primary School. It is a Co-Educational Catholic Maintained School serving the Parish Community of Camus.

The total enrolment is 457 pupils which includes 56 Nursery Places. There are two full time Nursery Classes ,14 Primary Classes and 2 Learning Centres (Junior and Senior) this year. The teaching staff consist of a Principal, Vice Principal and 20 Teachers (including two Part Time Learning Support Teachers).

History

The school is wonderfully positioned on a dual site where each part of the site is positioned within metres of the other.

The Senior School (hosts Year 5 – Year 7 Pupils and Nursery) is situated on Barrack Street itself next door to the Parish Church – The Church of the Immaculate Conception. The school is approximately ½ km (1/4mile) from Strabane Town Centre.

The original building was established in 1886 and extended in 1956 and further extended in 1972. Finally a new Nursery Unit was established in 1998.

The original part of the building established in 1886 is now the school Dining Hall and School Kitchen.

The second phase of the main building comprises of a reception area, seven classrooms, a secretary's office, Principal/ Vice Principal's Offices, ICT office, Reprographics Room, a Hygiene Room, Staff Room, Pupil Cloakrooms and storerooms.

The third phase of the building contains two Learning Support Rooms, ICT Suite, Assembly Hall and four classrooms.

The Nursery Unit is also part of the third phase and contains a Staff Room, Kitchen, two classrooms (with quiet rooms and separate pupil toilet facilities) and a small reception area.

The grounds include three tarmac playgrounds (one in Nursery), a carpark and a large grassed area to the front of the building.

The Junior School (hosts Year 1 – Year 4 Pupils) and is situated on Newtownkennedy Street within metres of the Barrack Street Site. The original building was opened in 1990 and has eleven classrooms, two learning support rooms, large open areas, a library, an ICT suite and a hall which is used for physical education, music, assemblies and other school functions. Meals are cooked in the site kitchen and are served fresh daily in the dining hall. The grounds include two tarmac playgrounds, a car park and an outdoor playtrail for our children to the rear of the building.

A Family School

St. Catherine's Primary School is a family orientated school where all pupils are known individually by all members of staff thus promoting confidence and self-esteem. We put very strong emphasis on the three-way partnership between home, school and our parish community. Regular contact between parents and the school is encouraged and a variety of community-based events are organised throughout the year to strengthen the school's links with the local community.

A Community School

Our school Chaplain plays an important role in the life of the school and in the preparation of the pupils for the sacraments. All of our pupils regularly take part in services at our local church, The Church of the Immaculate Conception, either as altar servers or readers.

The social development of our pupils, both in and out of school, is extremely important. Through attending school within their community they can maintain strong links with their school friends outside school hours, at play, birthday parties etc. Such interaction encourages within the pupils a sense of community. We implement an extensive Extended Schools Programme every year which enables many extra opportunities for all our children. We are also part of an Extended Schools Cluster Group with St. Mary's P.S. Cloughcor, Strabane P.S., and Strabane Academy.

An Achieving School

St. Catherine's Primary School with the commitment of our staff, and the support of our parents, continues to maintain a high standard of education. Provision is made for children of all levels of ability, where needs are identified, support is provided and challenges met. We pride ourselves on the long history of achievements in instrumental music, with excellent support from the Education Authority tutors. Our pupils are encouraged to take part in a variety of music competitions and performing arts events as well as competitions in art, Poetry (Several children had their literacy work published in books and generally enjoy celebrating their individual strengths), Writing, Quizzes and Public Speaking.

In the past our children have achieved recognition in

- 1) Feis Events
- 2) Best Kept School Grounds Awards
- 3) Action Cancer (Gold) Health Action Award (Most recent 2019)
- 4) Rights Respecting Schools Award
- 5) International Schools Award
- 6) PATHS Model School Award (June 2017)
- 7) Eco Flag Award (Most Recent (June 2022)
- 8) Sustrans Active Travel School Award (June 2018)

- 9) Strabane Chamber of Commerce Choir Competition (Senior and Junior Choir Winners)
Strabane Chamber of Commerce Business Awards (Management Recognition)
BBC Radio Ulster Choir of the Year/ Rotary Club Choir Winners/ Derry City Choral Festival

We feel that all our pupils should be provided with opportunities to display their many talents to a wider audience, and participation in such competitions has resulted in a high level of success, further enhancing self-esteem of the pupils and adding to the sense of achievement for the whole school community.



Learning Knows No Bounds

Quality Assurance from ETI
(Inspectors)

Inspectors visited our school in May 2016 and again in May 2019. They were very impressed with the quality of the teaching and learning being provided. There are four Grades that Inspectors award to schools to summarise the overall effectiveness of a school. Our school attained the highest level ...

Level 1 : *The School has a high level of capacity for sustained improvement in the interest of all learners.*

We are understandably very proud of this grade of overall effectiveness and are delighted that this has been recognised by Inspectors, Department of Education, CCMS, Education Authority and the public alike.

We are not however complacent and continue to work especially hard to make sure that the service we provide is one that continues to serve our children excellently hence our motto....

“Achieving Excellence Together”



Vision for the future

- To continue promoting the strong Catholic / Christian ethos of the school;
- To maintain high standards in delivery of the curriculum and pupil achievement;
- To maintain the positive, caring environment, which is a noted strength of the school, through continued partnership of home, school and parish;
- To ensure that the school continues to meet the requirements brought about by rapid changes in ICT and Northern Ireland Curriculum;

- To ensure the continued professional development of teachers in order to maintain high standards of staff morale and classroom teaching;
- To incorporate curricular changes and initiatives in whole school development;
- To maintain an attractive, learning environment for pupils;
- To ensure that the well being of all our pupils is at the heart of all that we do and to ensure therefore, that all children are nurtured in school so that each one will learn effectively at their own pace taking account of each child as an individual. To this end we are guided by the Principles of Nurture.
- To ensure continuing improvements in security, maintenance and resourcing of the premises;
- To ensure continuing improvements in provision of curricular resources.



We at St. Catherine's pride ourselves on being a Nurturing School. We follow the 6 Principles of Nurture in our approaches to the education of the little pupils entrusted to our care.

To this end we have a state-of-the-art Nurture Room Facility in school with an accompanying Sensory Room also.

Specialist targeted Nurture groups in Key Stage One are in operation in school where children can avail of nurture support as they progress. Our Nurture Teacher is Mrs J Mc Laughlin.

Our school is a safe place to be.



twinkl
visit twinkl.com

We all learn in our own way and in our own time.



twinkl
visit twinkl.com

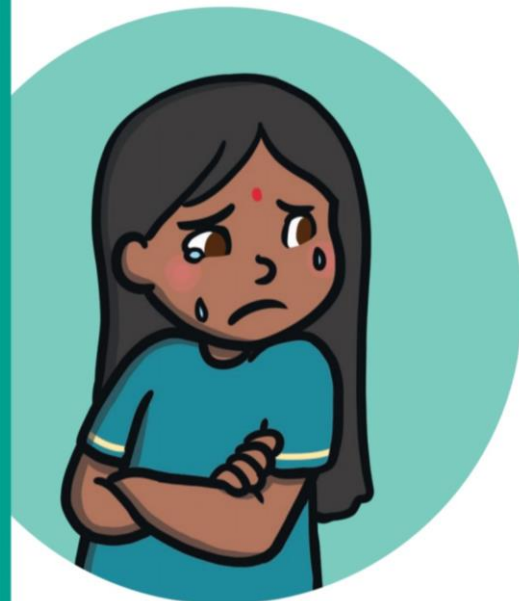


We can cope with change in our lives.



twinkl
visit twinkl.com

Our behaviour can show how we are feeling.



twinkl
visit twinkl.com

We believe in ourselves.

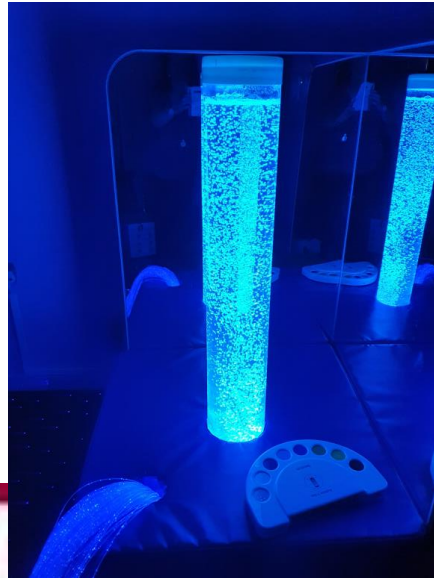


We use our words to talk about how we feel.









THE

group network 人人人

PLES

URE

- ★ The classroom offers a safe base
- ★ Language is a vital means of
- ★ developmentally
- ★ The importance of



Curriculum

At St. Catherine's Primary School we aim to: -

- recognise the individual needs and talents of each pupil and to provide for the development of moral, physical, social and creative capacities; thereby helping each child to become independent learners who will feel confident, competent and will achieve success in an ever changing world.
- to ensure delivery of a broad and balanced curriculum according to the Northern Ireland Curriculum and catering for the needs of all pupils;
- to provide a stimulating learning environment in which all pupils feel safe, happy and are challenged to achieve full potential.
- Recognise the important contribution of our parents (the first educators) and to value and encourage their involvement in their child's education
- Ensure effective links with the parish and wider community in order to create more effective learning opportunities for our children.

The Northern Ireland Curriculum

The Northern Ireland curriculum aims to give greater emphasis to important elements, such as children's Personal Development and Mutual Understanding , the explicit development of Thinking skills and Personal Capabilities.

Assessment of and for Learning opportunity and further enhance ICT Skills for all.

We aim to give every child the opportunity to experience success in learning and to achieve as high a standard as possible. The teachers aim to prepare our pupils for a rapidly changing world.

Stages in the Curriculum

1)Nursery Phase

2)The Primary Phases comprises:

The Foundation Stage: Years 1 and 2

Key Stage 1: Years 3 and 4

Key Stage 2: Years 5, 6 and 7

Structure of the Primary Curriculum

The Curriculum for the three stages is set out in six Areas of Learning.

1. Language and Literacy
2. Mathematics and Numeracy
3. The Arts (including Art and Design, Drama and Music);
4. The World Around Us (Geography, History, Science and Technology);
5. Personal Development and Mutual Understanding including Well Being Pastoral Programmes
6. Physical Education. (The children are offered two sessions of P.E. per week. The following facilities exist within our school – a multi-purpose hall, the external grounds consist of two playgrounds and a large grass area to the front. The extent of the grounds provides for many opportunities for curricular development.



Through its pastoral care provision the school seeks to demonstrate a continuing commitment to the moral, intellectual, personal and social development of all the pupils as secure, successful and participating members of the school and wider community. We are committed as a community to provision of a caring, friendly, nurturing and safe environment in which all pupils will feel valued. All

staff, parents and members of the Board of Governors will work together to promote and facilitate an atmosphere of care and respect within the community.



School Aims

- To be an integral part of the local Catholic community, promoting religious awareness and practice of the Catholic faith;
- To maintain an atmosphere of care, nurture and well-being for the individual child within the family context;
- To foster, in partnership with the parents and children, a system of pastoral care which promotes compassion, tolerance, forgiveness and self-esteem, while setting high standards of respect, self-discipline, commitment and generosity;
- To deliver a balanced and relevant curriculum, which will meet the needs of the pupils, encourage them to achieve full potential and prepare them for the future role in society;
- To deliver a carefully structured religious education programme, supported by local clergy, which incorporate participation in religious services;
- To enable each child to communicate clearly, confidently and effectively in both oral and written forms;

- To promote confidence in the application of computation skills with speed, accuracy and understanding, undertaking practical and problem solving activities efficiently;
- To develop confident use of ICT skills in keeping with the requirements of the Northern Ireland Curriculum;
- To promote appreciation and development of the creative and expressive skills through art, drama, movement and music;
- To develop physical skills, promote participation games, swimming and sports and develop awareness of the role of exercise in obtaining a healthy lifestyle;
- To foster knowledge, understanding and respect for the immediate environment and appreciation of our world;
- To promote links with the local community, we undertake cross community projects, develop respect for all traditions and cultures and heighten community awareness through support for charities such as Trocaire, Strabane Community Project, Foyle Hospice, Macmillan Cancer , Children Helping Children, Clic Sargent, Strabane Ethnic Community Association, RNIB, Community Search and Rescue, Strabane Downs Syndrome Support Group, Strabane Autism Support Group, Church of the Immaculate Conception, Life After, Action Cancer, FPIES and NSPCC.

Religious Education

We are dedicated to the teaching and living of our Catholic/ Christian and moral values in St. Catherine's Primary School. We are rooted in celebrating and respecting diversity and we are very inclusive. We welcome pupils from all faiths and non-faith based families. We place strong emphasis on our Home, School and Parish links. We do value the work of our local clergy and liaise regularly with the Derry Diocesan Education Centre.

We teach religious education and spirituality through the use of the Grow in Love Education Programme making maximum use of Bible stories as strong examples to our children on how to live our faith. We have sacred spaces in the school where

children can contemplate and pray. These sacred spaces reflect different themes throughout the year.

We have a mass at the beginning of each school year to give thanks and to share our hopes for the year ahead. Each class from Primary 3 to Primary 7 take turns to go to mass in the Immaculate Conception Church and celebrate a monthly focus through Year Group Assembly Shared Prayer in the company of our parents. The whole school share prayers and thoughts for the day ahead every morning.

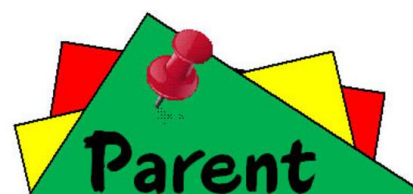
Preparation for the sacraments is very important and we work closely with the parish and neighbouring parish schools to make these occasions very meaningful and memorable for our pupils every year.

We encourage parents to support this work at home by teaching their children simple prayers, encouraging spirituality, making the sign of the cross, talking to them about God, The Holy Family and The Saints, telling them simple Bible stories and taking them to Chapel regularly.

Parent meetings

- | | |
|---------|-----------------------------------------------------------------------------------------------------------------------------------------------------------------------------------------------------|
| Sept | Nursery/Foundation stage Curriculum Information Meetings to ensure all our younger pupils are off to a great start. |
| Nov | Formal parent's meeting – opportunity for parents to discuss their child/children's progress with class teachers or seek advice/ clarification about work being done and target expectations |
| June | End of year written report is sent home. Any parent who wishes to discuss this report is welcome to make an appointment with the teacher concerned. |
| June: | Induction day for our new Nursery /Primary One Pupils and their parents. |
| Termly: | SEN review meetings with parent, class teacher/ Learning Support Leader to review and set Individual Education Plans. |

Other meetings may be arranged to deal with specific concerns or other activities as they arise.



Child Protection & Safeguarding

A Child Protection & Safeguarding Policy operates in St. Catherine's Primary School which aims to protect our pupils by ensuring that everyone who works in our school, teachers, non teaching staff and volunteers, has clear guidance on the detection and inter-agency management of situations where abuse or neglect of a child may be suspected. The paramount concern of all caring adults must be the welfare and safety of each and every pupil in our school.

The central principle which all staff members support is that every child has the fundamental right to be safe from harm and to have proper care given to their physical, emotional and spiritual well being. In all cases of suspected child abuse, the action which will be taken in St. Catherine's Primary School is that of informing social services, EA (Education Authority) and CCMS (Catholic Council for Maintained Schools). The school will not be involved in investigating the suspected abuse.

The Designated Teachers for Child Protection in St. Catherine's Primary School are Mrs. Wilders and Miss Doherty. The Deputy Designated Teachers for Child Protection are Mrs. B. Daly and Ms. Y. Mc Gowan. In the Nursery Unit the Designated Teacher is Mrs. B. Porter and the Deputy Designated Teacher is Ms. K. Carlin. All members of staff and members of the Board of Governors have received training in this area. The Designated Governor for Child Protection and Safeguarding is Mrs. A. Kelly.

It should be noted that information given to members of staff about possible child abuse cannot be held 'in confidence'. In the interests of the child, staff may need to share this information with other professionals. However, only those who need to know will be told.





Attendance

School Attendance Aims

Through this policy we aim to provide all our pupils with the maximum opportunities our curriculum provides. In order to achieve this we aim to maximise the attendance of our pupils, therefore they must attend regularly and be punctual.

At St. Catherine's Primary School we recognise that excellent attendance is the key to achievement at school.

Partnership between parents and the school

At St. Catherine's Primary School we recognise that attendance is the responsibility of pupils, parents and all school staff, who will work in partnership to ensure excellent attendance so that pupils reach their potential.

Matters pertaining to attendance will be mentioned and/or agreed upon ;

- when meeting new parents;
- when a concern about attendance should arise;
- in the governors' annual report to parents;

The whole school approach to attendance recognises the important roles of all members of the school community, including support staff and governors.

School responsibilities to improve attendance

In order to achieve an excellent standard we at St. Catherine's Primary School will adhere to our role of monitoring, encouraging and rewarding good attendance through:-

- ❖ a high quality curriculum so that pupils enjoy learning and want to come to school;
- ❖ providing for the needs of all pupils, offering an inclusive environment where all can achieve success;
- ❖ following up all unexplained or unauthorised absences with parents;
- ❖ attendance awards from school and Education Authority.
- ❖ a school pastoral system to support pupils experiencing difficulties.
- ❖ Rewarding children with 90%+ to 100% attendance on a termly basis
- ❖ Rewarding children with 100% attendance yearly at our Prizegiving Ceremony

Parents' responsibilities

In order to achieve excellent attendance at St. Catherine's Primary School we ask our parents to try to adhere to their role in supporting and encouraging their children.

Parents and carers should let the school know at the start of the school day, by telephone or by sending a note with a sibling, that the child is ill, or give any other reason for the absence. The school should be informed again if absence is likely to continue past 3 days. A note or medical certificate should be sent to confirm the reasons for the absence.

Parents should notify the school as soon as possible of when a pupil will return to school. This will allow for any necessary preparations on the part of the school and will help to monitor the return of pupils.

Parents are advised that it is not acceptable for pupils to be absent for the following examples and similar occasions:

- ❑ to spend a long weekend away from home;
- ❑ to stay at home for a delivery or similar event;
- ❑ to go shopping;
- ❑ to go to the airport;
- ❑ to visit relatives;
- ❑ to look after siblings;
- ❑ to take an unauthorised holiday in term time;

Absence from school affects the child's educational, social and personal attainment. The school therefore expects family holidays to be taken during school holiday periods.

Pupil's responsibilities

Pupils should:

- attend school regularly;
- arrive for school on time;
- take part in lessons as required by teaching staff;
- take full advantage of all opportunities offered;
- bring any difficulties such as bullying to the attention of the class teacher or other appropriate member of staff.

Pupil Attendance Policy is available from the Main Offices on either site upon request and is available on our website.



We aim at all times to maintain a discipline system, which is fair, reasonable and unobtrusive. Our school rules offer guidance for reasonable behaviour on a simple, practical and moral basis. We focus on the positive approach and have developed a Pupil of the Week Award system through which we promote and reward good behaviour as well as other efforts/achievements in school.

Examples of Our child friendly school/ class rules are as follows: -

- Play Safely.
- Line up when asked.
- Always walk in school.
- Be friendly.
- Always share.
- Join in
- Listen well
- Work hard
- Show respect

Breaches of discipline -

Good classroom discipline remains the responsibility of the class teacher and focuses on maintenance of good relationships between pupils, between teacher and pupils, and between teacher and parents. Teachers will keep records of [by recording incidents on the SIMS Behaviour Management Module on C2K Computer system]

- serious misbehaviour occurring in class or reported to them by non-teaching employees,
- regular disruptive behaviour affecting the pupil's own performance, or that of other pupils,
- regular misbehaviour in toilets, corridors, cloakroom or playground, which has been brought to their attention.

Our main focus is on the positive rather than the punitive approaches to discipline. However, we do recognise that breaches of discipline do occur and that appropriate sanctions must be imposed.

Positive approaches -

- use of Pupil of the Week Award system to encourage and promote self – esteem,
- use of the Harry Potter House Award system to promote team work throughout all classes within the school
- Praise awarded for social as well as academic achievement,
- verbal / non - verbal praise for good work and behaviour,
- use of stamps / stickers / post - its in homework books to inform parents of good work / behaviour,
- Lunchtime Supervisors Award system in the canteen and PATHS Playground Award System in the playground at lunchtime.
- visit to Principal for praise.



CHOOSE
Positive

The Harry Potter House Award System

The Whole School House Rewards System will begin in **November 2018 for ALL classes throughout the school from Nursery – Year 7**. Our children and parents were consulted regarding the names of the Houses that each child will become a member of and they chose the Four Houses of Harry Potter.

The Rules and Rewards:

House Point Rules:

How to earn points:

1 point:

excellent classwork, super homework, being creative, wonderful practical work, sporting skills, beautiful singing, fantastic problem solving

2 points:

good behaviour, great attitude in school, lovely manners, showing consideration to others, being kind and thoughtful to others in the playground and the canteen, participation in Hymn Practice, full uniform check, participation in events: eg. feis, Diwali, Chinese Show, Irish Language Show, Nativity and Assemblies.

Special Bonus:

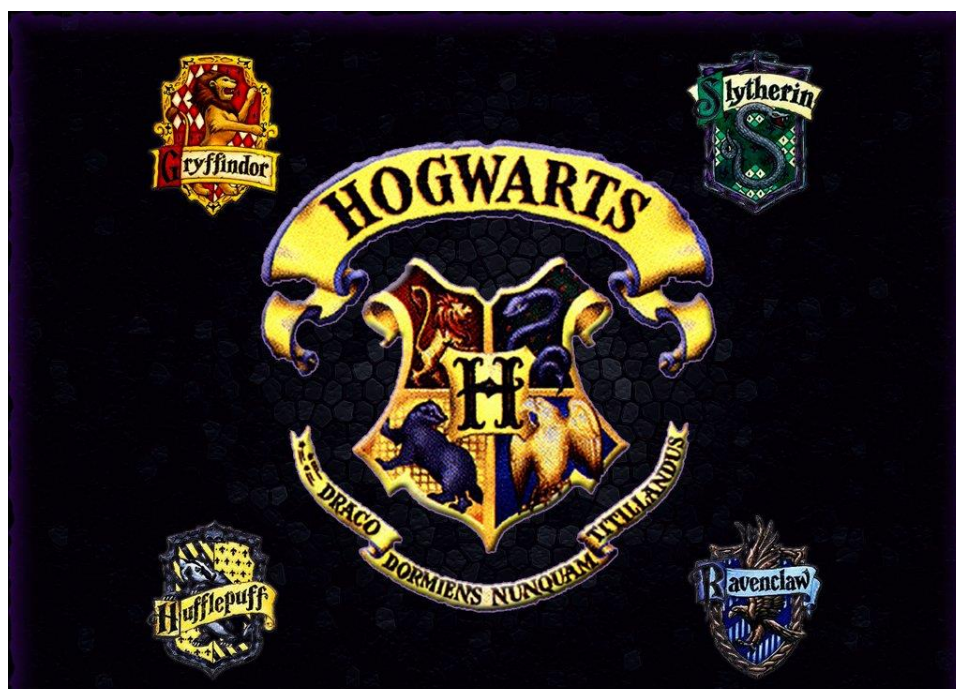
A pupil who does something extra special gains three points for their House!

Prizes:

Each month – Pupils in the 'House' with the most points, in each class, receive a 'Homework Pass.'

Each Term – The leading 'House' in each class gets a certificate.

At the end of the year – the House (throughout the whole school) with the most points wins the '**House Shield**' and each child in that House wins **a medal** and a **Day Trip!**





Summary of our Drugs Policy

As an integral part of the caring ethos of our school, our child centred approach to the safety and well - being of all pupils and in line with Pastoral Care provision we aim to -

- * Deliver a structured drugs awareness programme through Science, Religion and Health Education ,which provides opportunities for pupils to learn about the many dangers associated with misuse of drugs;
- * Avail of guidance from outside agencies as required to support our work; (e.g. Hope Northwest, CCMS, EA, Community Police, Social Services)
- * Ensure that all members of staff are kept informed of any DENI / EA developments pertaining to misuse of drugs;
- * Avail of training which provides staff members with information concerning the identification of substances regarded as controlled drugs and recognition of signs of drugs misuse;
- * Consult with members of the Board of Governors and parents regarding policy provision.

Misuse of drugs provision will cover the following areas -

- abuse of medicines, smoking(this applies to both cigarettes and e cigarettes), alcohol abuse, misuse of solvents (including glue sniffing) and the use of controlled substances.

Learning Support

In line with SEND all staff in St. Catherine's Primary School believe in an inclusive ethos and that every pupil has an entitlement to develop their full potential while being educated alongside their peers. Educational provision in this school addresses particular learning difficulties/differences/disabilities, as well as facilitating the efficient education for other children with whom they are educated, and also ensuring efficient use of resources.

We provide educational experiences which develop all pupils' achievements and recognise individuality. We value diversity and embrace it to support the learning of all.

As an inclusive school we work towards identifying and minimising the barriers to learning and provide equal opportunities for all. We provide a broad, balanced, relevant and appropriately challenging curriculum suitably differentiated to meet individual needs.

PROVISION, MANAGEMENT AND REVIEW

In line with SEND this school ensures that every child can access all aspects of school life and provision. The school will be directed by EA in planning accessibility to the school building.

The school offers a continuum of provision to meet the diversity of pupils needs. Although all classes are mixed ability, class teachers have the flexibility to set smaller ability groups within their class for literacy/numeracy.

Work is differentiated in all other areas and teachers take into account different learning styles, using a range of strategies including ICT to support provision.

Classroom assistants are provided where recommended by EA Special Education Department in children's statements and are fully involved in the child's target setting, provision and review.

Learning Support withdrawal groups are taught from Years 4-7 for specialist Literacy and Numeracy Support given by our own Learning Support Teacher in school.

The school works closely with EA Educational Psychology Service and various learning support agencies to ensure that each child benefits from the very best educational opportunity. Currently additional Learning Support is managed by our Vice Principal, one to one support is given by our Part Time Learning Support Tutor (P4-P7) , Year 2 and 3 targeted support given by a teacher and

by Peripatetic Teachers from SpLD, MLD, SBEW, Speech and Language, ASD, ADHD coupled with professionals from CAMHS, RISE NI and Parenting NI Services.

Key Stage 1 Learning Centre (Years 1-4)

We now have a SPECIALIST Learning Centre in St. Catherine's which offers a range of learning approaches to support pupils with varying needs.

The Learning Centre staff include one teacher (Mrs. Claire Hamilton) and three learning support assistants (Miss Tonia Friel, Ms Sheena Porter and Ms Louise French). This specialist classroom can accommodate up to 8 pupils (Maximum) from Years 1-4.

All pupils have access to a broad and balanced curriculum which will be appropriate to their individual needs and abilities.

Pupils will also have regular opportunities to integrate into their mainstream class to realise their full potential academically, socially and emotionally.

The children also have their own access to the state of the art Sensory Area in the classroom.



Key Stage 2 Learning Centre (Years 5-7)

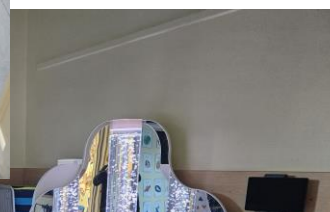
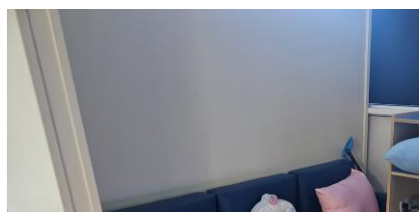
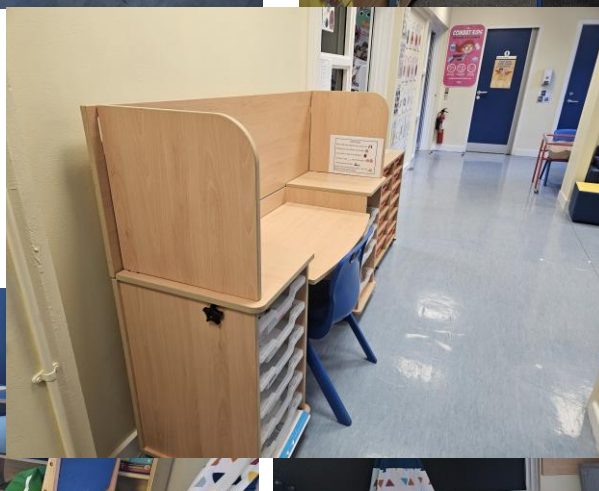
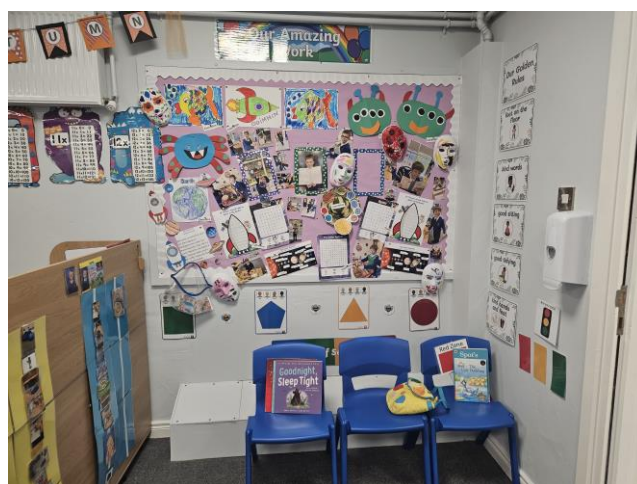
We also now have a SPECIALIST Key Stage 2 Learning Centre in St. Catherine's which offers a range of learning approaches to support pupils with varying needs in the Senior School.

The Learning Centre staff include one teacher (Mrs. Coleen Connolly) and a learning support assistant (Mrs Fiona Kennedy). This specialist classroom can accommodate up to 8 pupils (Maximum) from Years 5-7.

All pupils have access to a broad and balanced curriculum which will be appropriate to their individual needs and abilities.

Pupils will also have regular opportunities to integrate into their mainstream class to realise their full potential academically, socially and emotionally.

The children will also have their own access to the state-of-the-art Sensory Area attached to the classroom.





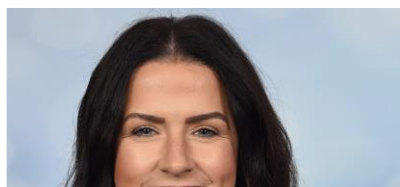
Learning Classes

Children are identified and prioritised for the LSC placement using agreed criteria and are referred to the Learning Class as a result of:

- Stage 3 Statement of Special Educational Needs.
- Referral by Educational Psychologist.
- Meetings attended by a range of professionals (Educational Psychologist, Community Pediatricians, Speech & Language Therapists, Children and Young Peoples Services).
- Consultation with parents and school.



Meet our Junior Learning Support Class Staff



Mrs Claire Hamilton
(Learning Centre Teacher)



Miss Tonia Friel
(Classroom Assistant)



Ms Sheena Porter
(Classroom Assistant)

Learning Support



Ms Louise French
(Classroom Assistant)



Mrs Coleen Connolly
(Learning Centre Teacher)



Mrs Fiona Kennedy
(Classroom Assistant)

Copies of all our school policies can be accessed on both sites. Personal copies can be obtained on request from our school offices and are available on our school website. Other information can also be obtained on request.

St. Catherine's Primary School has a complaints / concerns procedure which will inform parents of how to make a complaint or raise a concern about any matter. Parents can also make an appointment to see the class teacher, Vice Principal or Principal. **It should be noted that all parents are encouraged to speak directly with school staff regarding concerns/ complaints resolution and are strongly discouraged from the improper use of Social Media.**

Homework

Appropriate homework is set in all classes from Primary One to Primary Seven. This homework takes account of each child's age and stage of development. The homework is a form of reinforcement of work that has already been taught in class and is designed to further enhance understanding and promote independence and self-esteem. We use a Homework Diary for each child from Year 3-7 to communicate homework and messages between school and home.

The Extended Schools Programme

St. Catherine's Primary School offers a wide range of Extended Schools Programmes including the following examples Football, Gaelic, Hurling, Netball, Rugby, Cricket, Literacy/ Numeracy Booster Clubs, Drama, Lego Club, Fundamental Skills, Art Club, Science Club, Rugbybots, Athletics, Mindfulness, Yoga, Gardening etc as well as additional programmes/ courses for parents.

All this enables the school to foster links with the local community, raise the school's standard as well as delivering better outcomes for our pupils. An Extended Schools Newsletter is produced termly to keep everyone updated.

Breakfast Club

St. Catherine's Primary School is very fortunate to have a Breakfast Club on each site which operates everyday. Our children can avail of fresh toast, homemade scones, milk, fruit juice and many other early morning delights at

very reasonable prices. This facility is overseen by the kitchen staff and by the Principal / Vice Principal across both sites. The club is open from 8.15am – 8.45am daily.

Dinner / Lunch

Nutritionally balanced meals are freshly made on the premises everyday at a cost of **£2.60 per day**. See attached SAMPLE Primary School Menu at the back of this prospectus. Meals for the week should be paid for at the start of each week via the SCHOOL MONEY APP. Each child is issued with a 4-week menu. Details of free meal entitlement are available from Education Authority School Meals Section - Tel.028 82411411. Seating arrangements have been made for pupils who bring a packed lunch. In keeping with child safety requirements plastic bags or glass bottles should **NOT be sent to school with a pupil**.

Healthy Eating

In keeping with EA and DENI recommendations we operate a healthy break system and would ask that all pupils comply with this. Only healthy eating breaks / lunches indicated in our policy should be provided at break / lunch times. Please do not send chocolate bars, crisps or fizzy drinks for break/ lunch. We also cannot permit nuts in school or foods with nut traces in them due to pupils who have quite severe nut allergies. High-energy drinks are not appropriate and are actually quite dangerous for children's health. Our policy and practice is so good that we have won Action Cancer Gold Health Action Award three times in the past.

Uniform

The school uniform is compulsory. Children should wear sensible black shoes with non marking soles, as trainers are not healthy for feet when worn all day long.

.Girls

Macrae Tartan Kilt
White collared shirt
Macrae Tie
Royal Blue Jumper with school crest
Navy Woollen Tights (Winter)
White knee length socks (Summer)
Black Shoes

Boys

Navy trousers
White collared shirt
Macrae Tie
Royal Blue Jumper with school crest
Navy/ black socks
Black Shoes

Our uniform is available from Select Kidz Uniform Specialist, Spencer Rd,
Derry and GMG Logos Orchard Road Industrial Estate, Strabane

All uniform items should be clearly marked with the child's name.

P.E. – We request that each child brings a plain white t-shirt and a pair of navy jogging bottoms for PE on PE Days in school.

There is also a SUMMER Uniform that children can wear from May until June in the good weather. This is NOT COMPULSORY.

Bus Service

Some of our children are entitled to concessionary transport. If you have a child who wishes to attend our school and would like to access EA Transport then please contact the school office and we will provide you with further details. We would ask parents to ensure that your children are aware of the potential dangers when travelling on the school bus and support the school in encouraging all pupils to remain seated until the bus has stopped at the drop off points.

School Day

Our School Day

Below are the start times/ finish times for the Class Groups this year.

Year Group	Drop off / Collection Point	Start Time	Finish Time

Nursery Room 1	Nursery Room 1 External Door	9am-9.30am	1.30pm- 1.40pm
Nursery Room 2	Nursery Room 2 External Door	9am-9.30am	1.30pm- 1.40pm
Year 1A (Mrs Doherty)	Pupil Front door facing school gate	8.50am-9am	2.10pm
Year 1B (Miss Hutton)	Back Door opposite the Play Trail	8.50am-9am	2.10pm
Year 2 A (Mrs Mc Glynn)	Back Door opposite the Play Trail	8.50am-9am	2.15pm
Year 2 B (Ms Y Mc Gowan)	Pupil Front door facing school gate nearest to Mrs Doherty's classroom in Junior School Site	8.50am-9am	2.15pm
Learning Centre (Junior School) (Mrs Hamilton)	Middle Floor Door near mobile classroom at the back of the Junior School	8.50am-9am	2.10pm (Year 1) 2.15pm (Year 2) 3pm (Year 3 & 4 Pupils except Feel Good Friday)
Year 3 A (Miss M Maguire)	Pedestrian Gate to the right of the Main Gate at the Junior School Site	8.50am-9am	Mon – Thursday 3.00pm (2.30pm On Feel Good Friday)
Year 3 B (Mrs S Vaughan/ Mrs L Downey)	Pedestrian Gate to the right of the Main Gate at the Junior School Site	8.50am-9am	Mon – Thursday 3.00pm (2.30pm On Feel Good Friday)
Year 4 A (Miss E Mathers)	Pedestrian Gate to the right of the Main Gate at the Junior School Site	8.50am-9am	Mon – Thursday 3.00pm (2.30pm On Feel Good Friday)
Year 4 B (Ms B Kelly)	Pedestrian Gate to the right of the Main Gate at the Junior School Site	8.50am-9am	Mon – Thursday 3.00pm (2.30pm On Feel Good Friday)
Year 5 A (Ms C Gallagher/ Mrs C Gormley)	Enter Gate at the right hand side of the Senior School and line up at Year 5A Meeting Point where teacher will collect the class	8.50am-9am	Mon – Thursday 3.00pm (2.30pm On Feel Good Friday)
Year 5 B (Miss A Kerr/ Mrs S O'Kane)	Enter Gate at the right hand side of the Senior School and line up	8.50am-9am	Mon – Thursday 3.00pm

	at Year 5B Meeting Point where teacher will collect the class		(2.30pm On Feel Good Friday)
Year 6 A (Miss E Keyes)	Enter Double Gate at front of Senior School site nearest to the Main Front Door and line up at Year 6A Meeting Point where teacher will collect the class	8.50am-9am	Mon – Thursday 3.00pm (2.30pm On Feel Good Friday)
Year 6 B (Mrs C Deery)	Enter Double Gate at front of Senior School site nearest to the Main Front Door and line up at Year 6B Meeting Point where teacher will collect the class	8.50am-9am	Mon – Thursday 3.00pm (2.30pm On Feel Good Friday)
Year 7 A (Mrs C Gillespie)	Enter Gate at the right hand side of the Senior School and line up at Year 7A Meeting Point where teacher will collect the class	8.50am-9am	Mon – Thursday 3.00pm (2.30pm On Feel Good Friday)
Year 7 B (Mrs B Daly)	Enter Gate at the right hand side of the Senior School and line up at Year 7B Meeting Point where teacher will collect the class	8.50am-9am	Mon – Thursday 3.00pm (2.30pm On Feel Good Friday)
Learning Centre (Senior School) (Mrs Connolly)	Enter Gate at the right hand side of the Senior School and line up at Learning Centre Meeting Point where teacher will collect the class	8.50am-9am	Mon – Thursday 3.00pm (2.30pm On Feel Good Friday)

Complaints Procedure

At St. Catherine's Primary School we aim to provide a quality service to our pupils, parents and their stakeholders.

However we do acknowledge that from time to time concerns may arise.

We have specially designed our Complaints Policy / Procedure to establish a clear mechanism

Aims

Our Complaints

- provide an effective



es are encouraged to

• speak directly with school staff regarding concerns/ complaints resolution and are strongly discouraged from the improper use of Social Media.)

- facilitate the school in providing the best possible service for its pupils and the local community
- provide a simple, speedy and accessible service that respects confidentiality
- be courteous and respectful
- address issues arising from complaints in a fair and honest manner within the timescales set out
- treat individuals and groups with openness, equality and inclusiveness
- keep people informed of progress and the final outcome of the issues raised
- be simple, easily accessible and easy to use.

Your rights as a person making a complaint

In dealing with your complaint we will ensure that you receive:

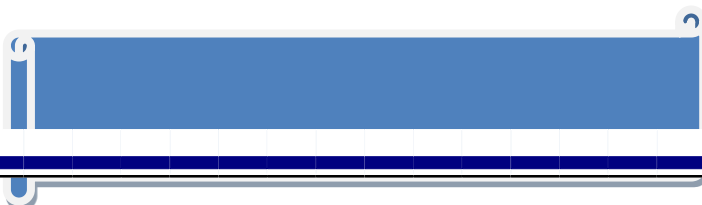
- fair treatment
- courtesy
- a timely response
- accurate advice
- respect for your privacy – concerns will be treated as confidentially as possible allowing for the possibility that we may have to consult with other appropriate Agencies about your complaint
- reasons for our decisions

Your responsibilities as a person making a complaint

In raising an issue we would expect that you:

- raise issues in a timely manner using the appropriate channels. (Please note that Social Media is not considered to be an appropriate channel for complaints)
- treat our staff as professionals, in a non-threatening manner and with respect and courtesy
- provide accurate and concise information in relation to the issue you raise

The full policy is available from the school.



Admissions

Every year we take applications for places into our Nursery and to our Primary School.

The Board of Governors of the school has agreed a set of Admissions Criteria in conjunction with the EA (Education Authority) and DENI (Department of Education for Northern Ireland).

We can admit 52 pupils to our Nursery and 58 pupils (Maximum 60) to our Year 1 Classes in Primary School. Parents apply for a place for their child by completing an ONLINE application form and submitting relevant documentation to the Clerical Officers on either site of our school. It should be noted that “Duty to Verify” documentation should be supplied e.g. child’s birth certificate and proof of address.

The criteria for admission to our Nursery and Primary School is strictly adhered to. **We strongly advise parents to read our admissions criteria and if any of the criteria applies please make sure that you include this clearly on the ONLINE application form.**

If there are more applications than there are places available we operate a Waiting List. Our Waiting List Policy is at the back of this prospectus.

St Catherine's Primary School
2 Newtownkennedy Street
Strabane
BT82 8HT

Maintained Primary School

Enrolment No: 406
Admissions No: 58

Tel No: 028 7138 2272
Fax No: 028 7138 2139
E-mail: bwilders592@c2kni.net

PRINCIPAL: Mrs B Wilders
CHAIR OF BOARD OF GOVERNORS: Mrs B Allen

Primary School Admissions **Criteria**

RESPECTIVE FUNCTIONS OF THE BOARD OF GOVERNORS AND PRINCIPAL IN RELATION TO ADMISSIONS

The Admissions Criteria will be applied by the Board of Governors.

The Board of Governors of St Catherine's Primary School have determined that the following criteria be applied to children who have attained compulsory school age and/or who deferred school seeking admission to Year 1 in September. Priority shall be given to children resident in Northern Ireland.

When considering which children should be selected for admission, the Board of Governors will only take into account information which is detailed on or attached to the application form.

Parents/Guardians should therefore ensure that all information pertaining to their child and relevant to the school's admissions criteria is clearly stated on the application form or attached to it.

NB: Children of the family includes sister/brother, half-sister/half-brother, adopted or foster sister/brother living at the same address.

ADMISSIONS CRITERIA – YEAR 1

During the admissions procedure when applying the criteria punctual applications will be considered before late applications are considered. The application procedure opens on 9 January 2024 at 12noon (GMT) and an application submitted by the closing date of 26 January 2024 at 12noon (GMT) will be treated as a punctual application. An application received after 12noon (GMT) on 26 January 2024 and up to 4 pm on 31 January 2024 will be treated as a late application, this is also the last date and time for processing a change of preference in exceptional circumstances. After 4 pm on 31 January 2024 no applications will be processed until after the close of procedure on 25 April 2024.

Priority will be given to children who will have attained compulsory school age at the time of their proposed admission, including those children whose parents deferred their admission to primary school in September 2023 as defined by the new School Age (NI) Act (both groups to be treated equally).

Priority will be given to children resident in Northern Ireland at the time of their proposed admission to the school before those who are not so resident.

Admissions criteria will be applied as below;

- 1 Children who have a child/children of the family currently enrolled in St Catherine's Nursery or Primary School.
- 2 A child who is the eldest child or only child in the family.
- 3 Children who normally reside in the Parish of Camus.
- 4 Children who normally reside in the East Ward of Strabane.
- 5 Children who normally reside in the North, South and West Wards of Strabane (on an equal basis).
- 6 Other children of compulsory school age / deferred school age. In the event of two or more identical dates of birth, selection will be made using the random alphabetical tie breaker as listed below.

In the event of over-subscription in the last criterion which can be applied then selection for all places remaining in this category will be on the basis of the initial letter of the surname as per the birth certificate, in the order set out below, this having been determined by a randomised selection:-

Mc O' K Mac I V Q U T R P L F B S M N Y E G A X D H J C O Z W

The order was determined by randomised selection of letters. In the event of surnames beginning with the same letter the subsequent letters of the surnames will be used in alphabetical order. In the event of two identical surnames the alphabetical order of the initials of the forenames as per the birth certificate will be used.

If a place is offered on the basis of incorrect or misleading information then the Board of Governors may withdraw the offer. All criteria will apply at the closing date of the application.

If parents/guardians have any difficulty in completing the Application Form they should consult the

Principal of the school.

YEAR 1 ADMISSIONS – AFTER THE BEGINNING OF THE SCHOOL YEAR

Children who apply to enter the school during the academic year will be considered using the same criteria as for Year 1.

DUTY TO VERIFY

Applicants should note that they will be required to produce documents verifying their address. All applications should provide any two of the following four documents;

- A bank or building society statement which shows the address at which the child is resident;
- A utility bill (for instance electricity, gas, Television Licence, telephone) which shows the address at which the child is resident;
- A letter awarding Child Benefit to the child or another letter relating to this benefit;
- The child's Medical Card.

If the requested evidence is not provided to the Board of Governors by the deadline given, this will result in the withdrawal of an offer of a place. Similarly, if information is supplied which appears to be false or misleading in any material way, the offer of a place will be withdrawn.

WAITING LIST

The school's policy on the consideration of applications after the Open Enrolment Admissions procedure concludes, is available directly from the school. Should a vacancy arise, the above criteria will be applied to select pupils from our waiting list.

ADMISSIONS CRITERIA – YEARS 2-7

The Board of Governors have established the following criteria for pupils in Years 2 -7. Children will be admitted subject to the enrolment number not being exceeded, nor, in the opinion of the Board of Governors that the admission would not prejudice the efficient use of the school's resources. If there is over-subscription then the criteria for Year 1 will be applied.

Applications and Admissions to Primary 1		
Year	Total Applications	Total Admissions
2021/2022	62	62
2022/2023	57	57
2023/2024	57	54

Waiting List Policy

Waiting List Policy

The Board of Governors of St. Catherine's Nursery and Primary School has decided to operate an automatic waiting list in the event that there are more applications for available places either in the Nursery Unit or in Years 1 to 7 of the Primary School. The arrangements for the operation of the waiting lists are detailed below:

1. Nursery Unit

The Nursery Unit has always been oversubscribed with more applications received than there are places available. After the closing date for applications in January, the published admissions criteria are applied to select those children who are to receive places in September. Letters offering the places are issued by the school in March/April (date determined by Education Authority).

Should a vacancy arise after the issue of placement letters by the school, applications for admission to the Nursery Unit that were initially refused, new applications, late applications and applications where new information has been provided, will be treated equally and the published criteria applied. The waiting list will remain in place from the issue of placement letters in March/April until 30 June of the following year.

The school will contact you in writing if your child gets a place in the school by this method. Your child's name will be automatically added to the list. Please contact the school if you wish for your child's name to be removed from the list.

2. Primary School: Years 1 - 7

Should a vacancy arise after the issue of the placement letters by the school for **Year 1** (normally during the month of April – date determined by Education Authority), all applications that were

initially refused, new applications, late applications and applications where new information has been provided, will be treated equally and the published criteria applied.

Should a vacancy occur at any time in **Years 2 – 7**, applications for admission to that year group that were initially refused, new applications, late applications and applications where new information has been provided, will be treated equally and the published criteria applied.

If you have been unsuccessful in securing a place in Years 1 – 7, your child's name will be kept on the waiting list until 30 June of the year in which the child would normally complete their Primary School education (end of Year 7).

The school will contact you in writing if your child gains a place in the school by this method. Your child's name will be automatically added to the list. Please contact the school if you wish for your child's name to be removed from the list.

ONLINE DIGITAL Admission Process

Every year the application process for both NURSERY and YEAR ONE Places must be completed online by parents.

The ONLINE system will open at 12 NOON on Tuesday 9th JANUARY 2024 and will close at 12 Noon on Friday 26th JANUARY 2024.

The ONLINE link is below www.eani.org.uk (Click on admissions)

Although in operation for three years now, we appreciate that this applications process can be still new to some parents and some parents might find this process a little unnerving. Some parents may apply online with ease, however for any that would like a little extra support and guidance, we have arranged for little “Drop in Sessions” in school so that parents can come in and apply for a place for their child with staff there ready to help and guide in the process.

The times that staff will be available to help are in the table below.

Day /Date	Location	Morning Session	Afternoon Session
Tuesday 9th January	Senior School (Barrack Street Site)	9am-10am	1pm-2pm
Wednesday 10th January	Senior School (Barrack Street Site)	9am-10am	1pm-2pm

Thursday 11 th January	Senior School (Barrack Street Site)	9am-10am	1pm-2pm
Friday 12 th January	Senior School (Barrack Street Site)	9am-10am	1pm-2pm
Monday 15 th January	Senior School (Barrack Street Site)	9am-10am	1pm-2pm
Tuesday 16 th January	Senior School (Barrack Street Site)	9am-10am	1pm-2pm
Wednesday 17 th January	Senior School (Barrack Street Site)	9am-10am	1pm-2pm

It should be noted that even though Parents make their applications for places ONLINE, they must also upload a copy of their PROOF OF ADDRESS and their CHILD's BIRTH CERTIFICATE to EA Website

What should I do now?

- ▶ Parents need to set up an email account if you do not already have one
- ▶ Check out the Education Authority (EA) website regarding Guidance on applications.....
www.eani.org.uk/digitaladmissions
- ▶ Plan for how to complete the application
...perhaps plan to attend a drop in session in school. You can book today by emailing Mrs C Kelly (Admissions Officer on ckelly452@c2kni.net or ring the school to get

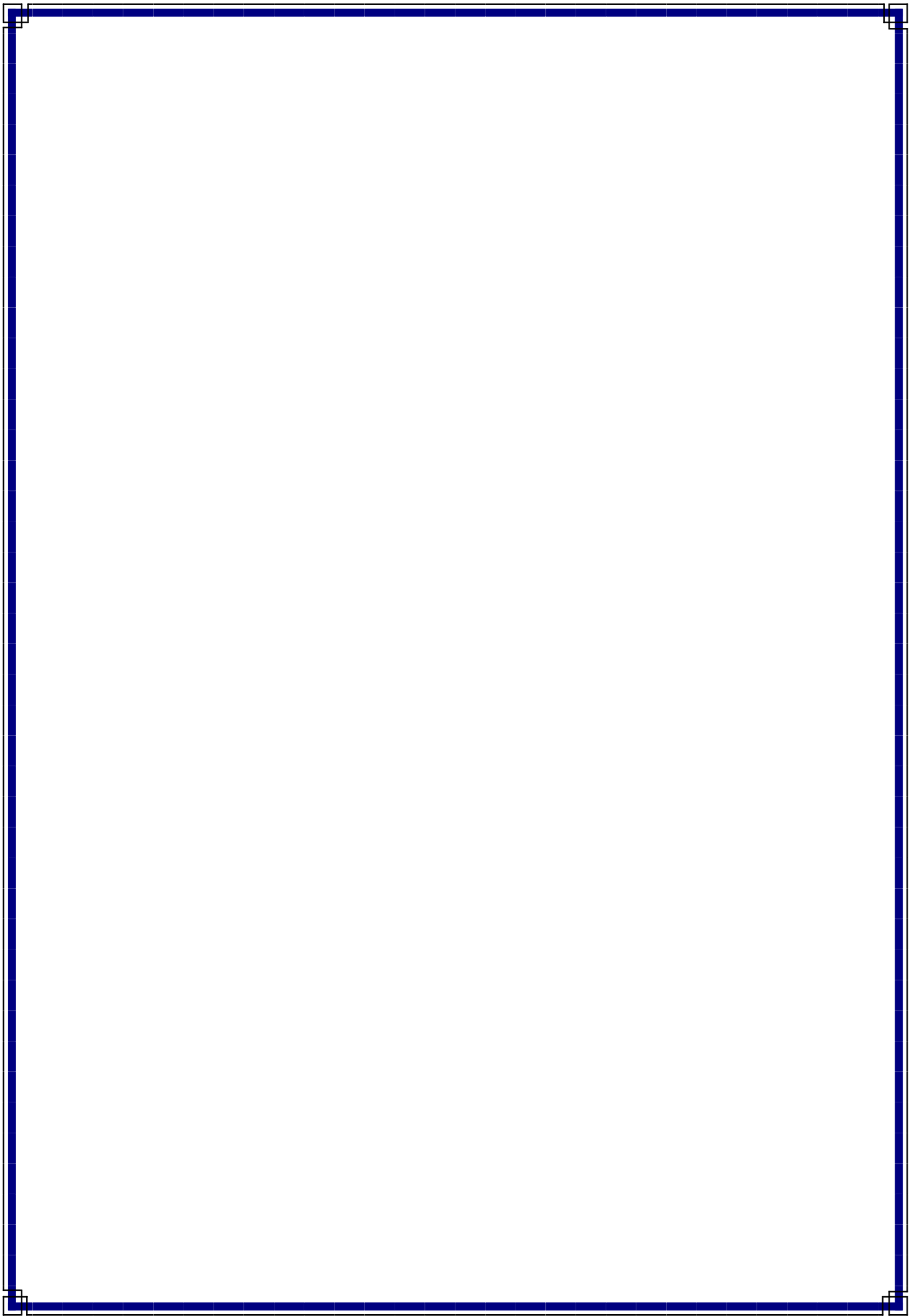
booked in on 02871 382614 and asking for Mrs Clare Kelly!)

It should be noted that even though Parents make their applications for places ONLINE, they must also upload to the EA Website

- ▶ 1. A paper copy of their PROOF OF ADDRESS,**
- ▶ 2. CHILD's BIRTH CERTIFICATE**
- ▶ 3. DSS (Confirmation of Income Support)**

Sample School Dinner Menu







EAT SMART WITH THE LUNCH BUNCH

ea catering
WEEK 1

Week commencing
AUG 28, SEPT 25, OCT 23,
NOV 20, DEC 18, JAN 22

MONDAY

MAIN COURSES

Spaghetti Bolognaise

Or

Chicken Bites

SIDES

Baton Carrot/Salad

Mashed Potatoes

DESSERT

TUESDAY

MAIN COURSES

Classic Margherita
Pizza

Or

Fish Goujon in Soft Shell
Taco & Zingy Tomato
Salsa

SIDES

Baked
Beans/Salad/Coleslaw

Chipped Potatoes/
Baked Potato

DESSERT

WEDNESDAY

MAIN COURSES

Lunch Bunch Chicken
Curry & Naan Bread

Or

Chicken Panini

SIDES

Garden Peas/Sweetcorn

Steamed Rice/Oven
Baked Wedges

DESSERT

THURSDAY

MAIN COURSES

Roast of the Day

Or

Chicken Casserole

SIDES

Carrots & Parsnip/Savoy
Cabbage

Mashed Potatoes/Oven
Roast Potato

DESSERT

FRIDAY

MAIN COURSES

Hot Dog

Or

Crispy Cod Fishcakes

SIDES

Tomato
Ketchup/Coleslaw/Salad

Chipped Potatoes/Baked
Potato

DESSERT



EAT SMART WITH THE LUNCH BUNCH

ea catering
WEEK 2

WEEK COMMENCING:



EAT SMART WITH **THE LUNCH BUNCH**

ea catering
WEEK 3

WEEK COMMENCING:
SEP 11, OCT 9, NOV 6,
DEC 4 JAN 8 FEB 5

MONDAY

TUESDAY

WEDNESDAY

THURSDAY

FRIDAY





EAT SMART WITH THE LUNCH BUNCH

ea catering
WEEK 4

WEEK COMMENCING:
SEP 18, OCT 16, NOV 13,
DEC 11, JAN 15, FEB 12

MONDAY

MAIN COURSES

Beef Bolognese with
Garlic Bread

Or

Cod Fishcakes with
Tartare Sauce

SIDES

Garden Peas

Oven Baked Potato
Wedges

DESSERT

Melon, Mandarin &
Pineapple Pots with
Yoghurt Dip

TUESDAY

MAIN COURSES

Ham & Cheese Pizza or
Pepperoni with Garlic
Dip

Or

Tex Mex Beef & Veg
Enchilada

SIDES

Sweetcorn and Red
Pepper/Coleslaw

Chipped
Potatoes/Baked Potato

DESSERT

Jelly & Mandarin
Oranges

WEDNESDAY

MAIN COURSES

Lunch Bunch Chicken
Curry & Naan Bread

Or

BBQ Chicken Wrap with
Crunchy Salad

SIDES

Green Beans

Steamed Rice

DESSERT

Cornflake Tart &
Custard

THURSDAY

MAIN COURSES

Roast of the Day

Or

Stuffed Chicken

SIDES

Broccoli/Turnip

Mashed Potatoes/Oven
Roast Potato

DESSERT

Ice Cream, Pears &
Chocolate Sauce

FRIDAY

MAIN COURSES

Oven Baked Chicken
Goujons

Or

Sweet Chilli Chicken
Panini

SIDES

Salad/Baked Beans

Chipped
Potatoes/Mashed
Potatoes

DESSERT

Homemade Ginger
Biscuit and Fruit

MILK, WATER, BREAD AND
FRESH FRUIT AVAILABLE DAILY

MENU MAY CHANGE DUE
TO DELIVERY CHANGES

IF YOU REQUIRE ANY ADDITIONAL INFORMATION ON ALLERGENS OR
SPECIAL DIETS PLEASE CONTACT YOUR SCHOOL